

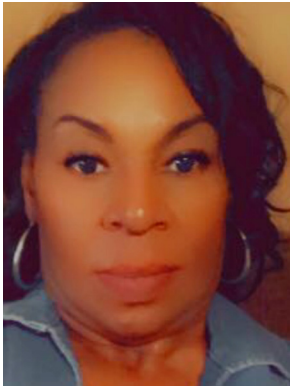


Covington DRC Update



OCTOBER 2021

WELCOME

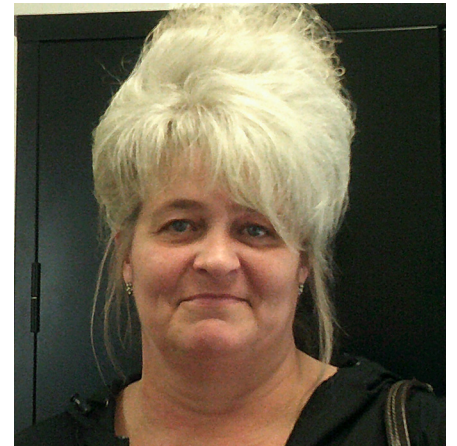


This quarter, the Covington DRC has revitalized some of our community partnerships that have been put on hold by the pandemic. We recently partnered with Byrd Avenue Elementary School in Bogalusa to donate school supplies to their pre-k students and have reactivated our volunteer work with Habitat for Humanity Restore in Mandeville and the St. Tammany Parenting Center in Covington. We've also had many participants who have continued to work hard to complete the program amidst disruptions caused by the pandemic and Hurricane Ida: participant Danielle B. recently completed Living in Balance and is only a few steps away from completing MRT, all while working full-time, while participant Sherry H. recently finished both Thinking for a Change and MRT. Finally, a big thank you to our tutor volunteer Ann Kungel, the Director of Next Chapters, an organization that partners with us to provide HiSET and literacy tutoring for our participants. Thanks for reading our October update, and please stay safe!

Annette Ellis
Program Manager

SPOTLIGHT ON... PARTICIPANT SHEILA S.

Congratulations to participant Sheila S, who has been working hard to change her behavior, reduce criminal thinking and learn the skills and tools necessary to reintegrate into the community as a productive citizen. Sheila has been working full-time for several months and recently finished all required groups for the DRC program as well as aftercare. We are happy to announce that after months of attending classes and groups, Sheila will be a graduate at our next transition ceremony. We are very proud of Sheila's accomplishments and wish her continued success in all her future endeavors. The sky is the limit for Sheila!



DID YOU KNOW?



Current research reveals the most effective reentry programs are those that target their evidence-based interventions to the level of offender risk. GEO Reentry prioritizes correctional resources for high-risk offenders, ultimately using these resources more efficiently to help customer agencies reduce recidivism and boost public safety. At GEO Reentry centers nationwide, staff members intervene according to a participant's risks and needs, which are identified during an initial risk/needs assessment. While undergoing cognitive behavioral therapy, employment readiness classes, and counseling, participants begin to remedy criminogenic thinking patterns and increase prosocial behavior, gaining the tools they need to live more productive and law-abiding lives.

By Wendy Dressler, GEO Care Research Analyst